

PARK•LANE
JEWELRY | EST. 1955



RETRO
CHIC
COLLECTION

OUR STORY



Arthur LeVin Sr. & Shirley LeVin
Founders



Scott LeVin, Arthur LeVin III, &
Mark LeVin Sr.

In 1955, co-founders, Arthur and Shirley LeVin established their company based on the philosophy of providing a business model that allows everyone to pursue their dreams. As the world's leading direct sales jewellery company, Park Lane proudly offers quality jewellery that is backed by an unconditional guarantee.

Today, the second generation has embraced the founders' philosophy and has expanded the opportunity to countless people in international markets. For over six decades, Park Lane has inspired and empowered women & men to be their best.

Our history. Your future.

Visit: parklanejewellery.com.au to make your dreams come true.

CUSTOMER SALE

BUY 2 GET 4
HALF OFF



Buy 2 items at full price and get up to
4 items at half price.

Select your least expensive items at
regular price and your more expensive
items at half price!

*"Dream it and achieve
it with
Park Lane Jewellery!"*

We're so sure you'll love our jewellery,
we offer a 120 day replacement guarantee.

For more info visit:
parklanejewellery.ca/guarantee

Prices are subject to change.

SHOP @ PARKLANEJEWELLERY.COM.AU



A. GEM BRACELET

#15043 | \$184

Crystals
Available in blue or pink
2 1/4" in diameter
Stretch to fit

B. SKYE NECKLACE

#15028 | \$274

Faceted glass beads and
genuine hand dyed jade
4 in 1 style necklace
16" - 17" - 20"

C. SONNY RING

#15036 | \$132

Crystals
Size 6-10

D. HAZY EARRINGS

#15056 | \$54

Available in gold or silver
7/8" in diameter

BUY 2 GET 4
HALF OFF





EVEREST NECKLACE
#14864 | \$216
Genuine jade beads 3
Necklaces in 1
16", 18", 24" + 3"



RIVER RING
#14697 | \$88
Genuine blue aventurine
Size 6-10



FIG BRACELET
#14679 | \$122
Genuine agate beads
Stretch to fit - 2 1/2" in diameter



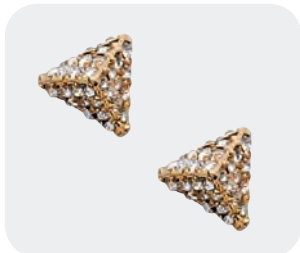
MONACO EARRINGS
#14882 | \$82
Set of three earrings
5/8" - 7/8" - 1 1/4"



ARCADIA BRACELET
#14872 | \$128
Gold with green crystals or
Silver with blue crystals
Stretch to fit - 2 1/2" diameter



DALLAS EARRINGS
#14144 | \$90
Gold or Silver
1 1/2" in diameter



CLEO EARRINGS
#12387 | \$22
Crystals
3/8"



CHIC NECKLACE
#15029 | \$132
Perfect for doubling
or wearing long 36"
+3"



RAE EARRINGS
#15032 | \$90
Turquoise cabochons
1 1/4" in diameter



PHOEBE RING
#14867 | \$70
Size 6-10



FAWN RING
#15034 | \$96
Opal cabochons in mint,
blue and white hues
Size 6-10



RAE BRACELET
#15027 | \$204
Turquoise cabochons
Stretch to fit
2 1/4" in diameter



SUNSET NECKLACE

#14875 | \$270

3 in 1 style necklace - Crystals
Genuine jade, amazonite, and malachite beads
Removable heart pendant - 15", 16", 20" + 3"



SUNSET BRACELET

#14958 | \$116

Crystals - hand-dyed jade, malachite, amazonite,
and glass beads
Stretch to fit - 2 1/2" in diameter

STARDUST EARRINGS

#14884 | \$42

Druzy style
Pink or White
1/2" diameter



BIJOUX RING

#14468 | \$96

Multi color CZ's
Size 6-10



VIBES BRACELET

#14706 | \$154

Hand painted enamel & crystals
Available in black or green
Stretch to fit - 2.5" in diameter



COBALT NECKLACE
#15031 | \$186
 Hand painted enamel
 16" + 3"



DOMINO RING
#13233 | \$62
 Titanium Carbide
 White or Black - Size 6-10



PARADIGM RING
#13445 | \$54
 Crystals - Set of 3 Rings
 Size 6-10



LANA NECKLACE
#14819 | \$48
 Hand-cut lucite.
 Available in black,
 lavender, red or white
 16" + 3"



LANA EARRINGS
#14713 | \$42
 Hand-cut lucite.
 Available in lavender, white,
 black or red
 1/2"



VIBES BRACELET
#14706 | \$154
 Hand painted enamel & crystals
 Available in black or green
 Stretch to fit - 2.5" in diameter



A. FAIRYTALE NECKLACE

#14529 | \$106

2 in 1 style - 16" + 3"
23" + 3"

C. DIMENSION RING

#12637 | \$34

Gold or Silver
Size 6-10

E. SANDALWOOD BRACELETS

#14868 | \$178

Set of six bracelets - Crystals
Wood beads and faceted beads
2 1/2" diameter
Stretch to fit

B. FUREVER NECKLACE

#13893 | \$76

Crystals
16" + 3"

**D. STARDUST
EARRINGS**

#14884 | \$42

Druzy style
Pink or White
1/2" diameter

**BUY 2 GET 4
HALF OFF**





A. TANSY NECKLACE

#14712 | \$116

Genuine quartz and faceted beads
CZ charm - 16"+3"

B. GROOVY EARRINGS

#15049 | \$100

Genuine hand-dyed feathers
5 1/2" long

C. NAMASTE RING

#12997 | \$34

Crystals
Size 6-10

D. CREPE EARRINGS

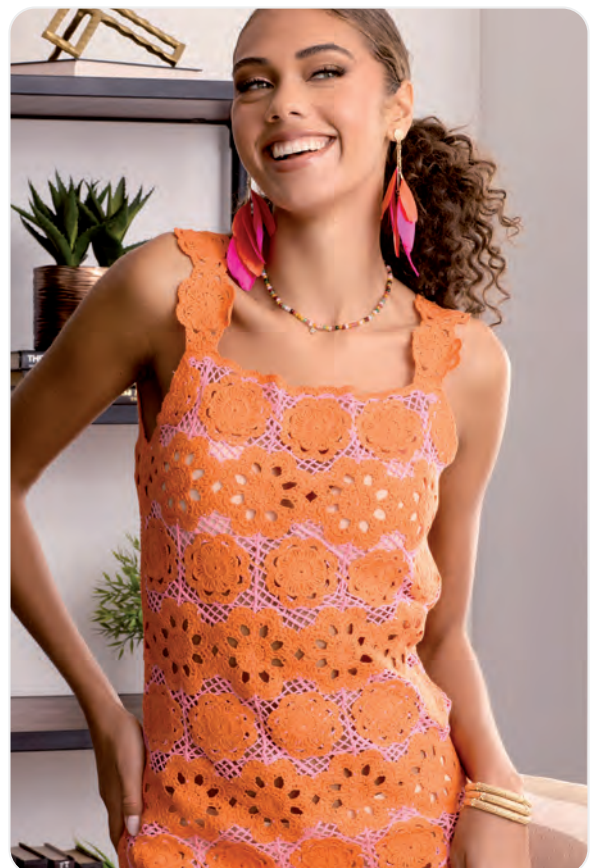
#12841 | \$26

Gold or Silver
7/8"

E. RICA BRACLET

#13665 | \$64

Silver or Gold
Stretch to Fit





A. MINNIE NECKLACE

#14862 | \$144

Removable heart pendant
20" +3"

C. EMBRACEABLE BRACELET

#14272 | \$56

Gold or Silver
2 1/2" diameter

E. CHICO EARRINGS

#13789 | \$38

Gold, Rose Gold,
or Silver

B. EMBRACEABLE EARRINGS

#14885 | \$42

Gold or Silver
1 1/8" in diameter

D. FLORA RING

#14465 | \$100

CZs
Size 6-10

**BUY 2 GET 4
HALF OFF**





DAISY EARRINGS
#15042 | \$102
Crystals
2" long



NIRVANA BRACELET
#15041 | \$218
Faceted glass beads
Genuine rose quartz and
rhodochrosite and hematite beads
19" + 2" - Adjustable



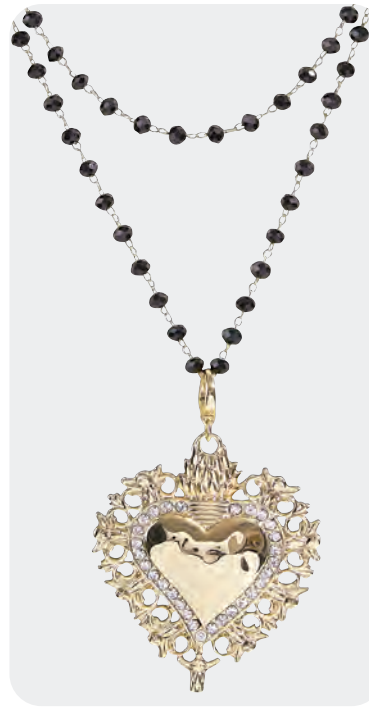
SORREL BRACELET
#14700 | \$74
Crystals - Adjust to fit
Gold or Silver - 2.5" in diameter



ANGELIC NECKLACE
#14156 | \$122
CZs - Gold or Silver
3 in 1 Style
15", 16, & 18"+3"



DOTTIE EARRINGS
#13153 | \$22
Rose Gold, Gold, Silver
or Hematite 3/8" diameter



ASHTON NECKLACE
#14871 | \$148
 2 in 1 style necklace
 Black faceted
 glass beads
 Removable pendant
 15" & 18" + 3"



TIRAMISU RING
#14881 | \$68
 Black cabochons and
 glass pearls & crystals
 Size 6-10



WREN EARRINGS
#13677 | \$58
 Set of 3 - Crystals & Pearls
 5/8" diameter



BOMBSHELL BRACELET
#14012 | \$238
 Crystals - Enamel Pink,
 White or Black - Stretch to Fit



DENVER BRACELET
#14692 | \$216
 Genuine white turquoise
 Set of 4 bracelets
 Available in black or white
 Stretch to fit - 2.5" diameter



OCEAN EARRINGS
#15047 | \$96
Turquoise wooden beads
2 1/2" in diameter



PHOENIX NECKLACE
#15037 | \$96
Crystals
Turquoise cabochons
16" +3"



WATERFALL RING
#14154 | \$122
Turquoise CZs
Size 6-10



KAI BRACELET
#13275 | \$44
Adjust to fit



FLAIR BRACELET
#10287 | \$38
Gold or Silver - Adjustable
2 1/4" diameter



A. ESME NECKLACE

#14704 | \$140

2 in 1 style necklace
Genuine mother & crystals
18", 16" + 3"

C. BOMBSHELL BRACELET

#14012 | \$238

Crystals - Enamel Pink,
White or Black - Stretch to Fit

E. DOVEY EARRINGS

#13223 | \$34

Gold, Silver or
Glass Pearls
Reversible - 5/8"

B. MCKENNA BRACELET

#13639 | \$54

Crystals - Pearls
8"

D. MOONFLOWER RING

#14879 | \$112

Genuine mother of pearl
Micro pave CZs
Size 6-10

**BUY 2 GET 4
HALF OFF**





DOLLY NECKLACE

#15058 | \$76

High polished golden sphere beads
16" +3"



SAWYER RING

#13870 | \$74

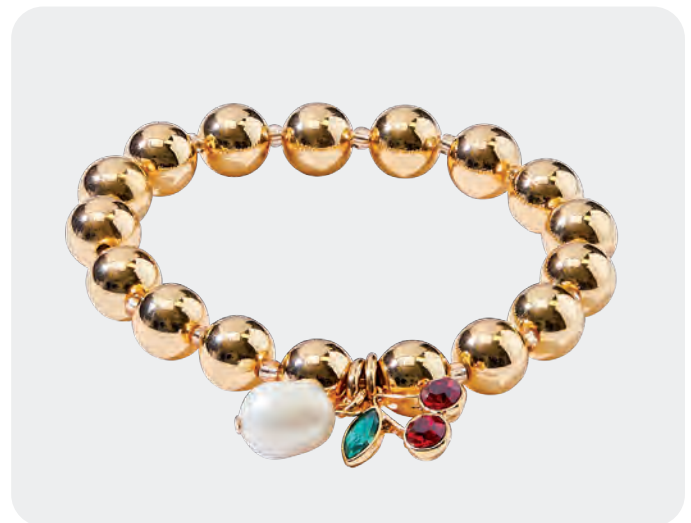
Gold or Silver
Size 6-10



MARSHMALLOW BRACELET

#13764 | \$128

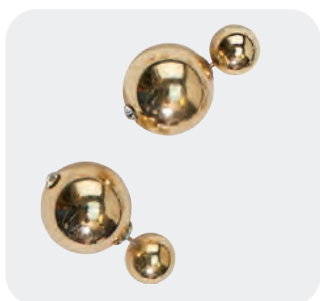
Hand Painted White Enamel
Faceted Crystals - Stretch to Fit



TART BRACELET

#15055 | \$116

Cherry charm in crystals
Genuine freshwater pearl charm
Stretch to fit - 2 1/2" in diameter



DOVEY EARRINGS

#13223 | \$34

Gold, Silver or
Glass Pearls
Reversible - 5/8"



IVORY NECKLACE

#14874 | \$112

Hand painted white enamel
Crystals - 16" + 3"



BOMBSHELL BRACELET

#14012 | \$238

Crystals - Enamel Pink,
White or Black - Stretch to Fit



LANA NECKLACE

#14819 | \$48

Genuine mother of pearl
Available in black,
lavender, red or white
16" + 3"



WISHBONE EARRINGS

#14701 | \$54

Gold or Silver
1" long

LANA EARRINGS

#14713 | \$42

Genuine mother of pearl
Available in black,
lavender, red or white
1/2" diameter



DENVER BRACELET

#14692 | \$216

Genuine white turquoise
Set of 4 bracelets
Available in white or black
Stretch to fit - 2.5" diameter



A. APRICOT NECKLACE

#15059 | \$56

Hand painted enamel
16" + 3"

C. GEM BRACELET

#15043 | \$184

Crystals
Available in pink or blue
Stretch to fit
2 1/2" in diameter

E. CREST EARRINGS

#14271 | \$70

Crystals - Gold, Silver,
or Rose Gold
5/8"

B. SHERBET NECKLACE

#15046 | \$114

Genuine hand dyed jade
stones
16" + 3"

D. CREST RING

#13653 | \$64

Crystals
Size 6-10

F. BONNET EARRINGS

#14183 | \$56

Trillion Cut Crystals
Pink or Blue
1/2"



TRUDY NECKLACE

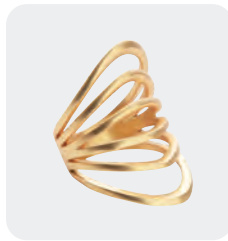
#14287 | \$100

2 in 1 necklace - Gold or Silver
16" + 3" - 20" + 3"

DIMENSION RING

#12637 | \$34

Gold or Silver Size
6-10



MATINEE EARRINGS

#0892 | \$22

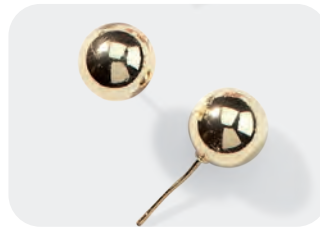
Pearls
1/4"



CREME BRACELET

#13466 | \$118

Crystals & Faceted Beads
Set of 5 - Stretch to Fit



CHICO EARRINGS

#13789 | \$38

Gold, Rose Gold,
or Silver



BRYNLEE NECKLACE

#13565 | \$44

Genuine Freshwater Pearl
16" + 3"

**BUY 2 GET 4
HALF OFF**

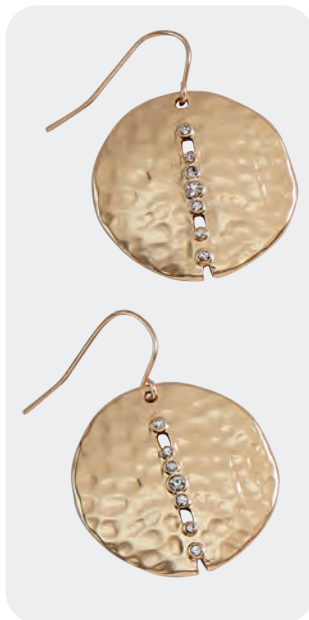




HARMONY NECKLACE
#15030 | \$134
Genuine hand dyed fresh-
water pearl shells
Removable cross pendant
16'+3"



JULIET NECKLACE
#13557 | \$42
Gold or Silver
16" + 3"



MARGOT EARRINGS
#14547 | \$58
Crystals - Gold or Silver
1 1/2" long



REESE RING
#13368 | \$72
CZs
Size 6-10



WILLOW BRACELET
#14175 | \$178
Genuine Freshwater Pearl - Set of 3
Stretch to Fit - 2 1/4" in diameter



FLUTTER NECKLACE
#15040 | \$82
Paisley embossed
butterfly charms
16" + 3"



MANTRA BRACELET
#12611 | \$80
Gems & Vegan leather cord
Adjustable 8 1/2"



WORTHY RING
#14173 | \$90
CZS
Size 5-10



CARMELIA EARRINGS
#14883 | \$64
Set of three earrings
1", 1 1/8", 1 5/8"



RANGER NECKLACE
#14865 | \$196
Faceted beads
Wear it as a wrap bracelet shown below
Stretch to fit - 60"



JAZZY EARRINGS

#15045 | \$138

Crystals
2 1/4" long



JOSIE RING

#12959 | \$106

CZs - Gold or Silver
Size 6-10



HAPPY EARRINGS

#14184 | \$56

CZs - Gold or Silver
1/2"



FREESIA BRACELET

#15060 | \$184

Hand painted flowers and micro pearls
Available in gold or silver - 2 1/2" in diameter



HAPPY NECKLACE

#13753 | \$76

CZs - Gold or Silver
Reversible - 15" + 3"



A. MONTE CARLO RING
 #14563 | \$190
 CZs
 Size 6-10

C. FAITH EARRINGS
 #14869 | \$38
 Crystal
 1/2"

E. CHATEAU BRACELET
 #14458 | \$228
 CZs and genuine mother-of-pearl
 Gold or Silver - 2 1/2" diameter

B. CHERUB NECKLACE
 #14703 | \$112
 2 in 1 style necklace
 Genuine Freshwater pearls and
 micro pave CZS
 16", 18"+3"

D. TWIZZLER EARRINGS
 #13295 | \$36
 Gold, Rose Gold, or Silver
 2 1/2" long

BUY 2 GET 4
HALF OFF





FOXY NECKLACE
#15039 | \$70
Gold or Silver 16"
+ 3"

FOXY EARRINGS
#15038 | \$54
Gold or Silver
1/2" in diameter



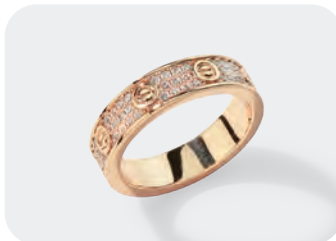
DECLAN NECKLACE
#14876 | \$112
2 in 1 style
16", 26" + 3"



BAUBLE BRACELET
#14467 | \$274
CZ's - Gold or Hematite
2 1/2" Diameter



GLO EARRINGS
#12984 | \$48
Crystals- Gold, Silver,
Rose Gold or Hematite
1" Diameter



PROMISE RING
#13794 | \$116
CZs - Gold or Silver
Size 6-10



ELEXA NECKLACE
#13659 | \$88
 Gold or Silver
 3 in 1 Style
 15" - 20" - 24" + 3"



CHANTEL EARRINGS
#14273 | \$86
 Gold or Silver
 1 1/2" diameter



PALMER RING
#13996 | \$112
 CZs
 Size 6-10



WINDSOR NECKLACE
#14463 | \$56
 CZ - Blue-Silver or
 Clear-Gold
 16" + 3"



DENALI BRACELET
#13638 | \$90
 Set of 5 bracelets - Gold or Silver
 Stretch to Fit



LIFESTYLE BRACELET
#12901 | \$52
 Gold, Silver or Hematite
 2 1/2" diameter



VIPER NECKLACE
#14863 | \$116
2 in 1 style
16" + 3"



LENNOX NECKLACE
#15044 | \$102
Crystals
16" + 3"



QUEENIE EARRINGS
#15048 | \$122
Crystals
1 1/8" in diameter



CUTESY RING
#15035 | \$80
Crystals
Size 6-10



ROYAL BRACELET
#14149 | \$288
Gold, Silver, or Rose Gold
2 1/2" diameter



HONEY NECKLACE
#13563 | \$70
15" + 3"



ALMOND EARRINGS
#14018 | \$42
Gold, Rose Gold, or Silver
2 " long



NAMASTE RING
#12997 | \$34
Crystals
Size 6-10

LANA NECKLACE
#14819 | \$48
Hand-cut lucite.
Available in black,
lavender, red or white
16" + 3"



LANA EARRINGS
#14713 | \$42
Hand-cut lucite.
Available in black,
lavender, red or white
1/2" diameter



WILDER BRACELET
#14880 | \$144
Gold or Silver
2 1/2" diameter



HAZY NECKLACE
#14159 | \$106
Gold or Silver 16"
+ 3"



HAZY BRACELET
#14471 | \$58
Gold or Silver
Stretch to fit



WHISPER EARRINGS
#8916 | \$22
Silver or Gold
4" long



LANA NECKLACE
#14819 | \$48
Hand-cut lucite.
Available in black,
lavender, red or white
16" + 3"

LANA EARRINGS
#14713 | \$42
Hand-cut lucite.
Available in black,
lavender, red or white
1/2"





ELECTRIC NECKLACE

#14004 | \$70

Gold or Silver - 2 in 1 style
Crystals - 15" & 17" + 3"



SERENA BRACELET

#11760 | \$74

Gold, Rose Gold, or Hematite
Stretch to Fit



ROO NECKLACE

#13260 | \$38

Crystals - Gold, Silver, Rose Gold, or Hematite -15" + 3"

ROO EARRINGS

#13644 | \$42

Crystals - Gold, Silver, Rose Gold, or Hematite
1/2" diameter



JEWEL BRACELET

#13366 | \$114

Crystals
Rose Gold, Silver, Gold, or Hematite
Hinge closure - 2 1/2" diameter

JOSIE RING
#12959 | \$106
CZs - Gold or Silver
Size 6-10



HAZY EARRINGS
#15056 | \$54
Available in gold or silver
7/8" in diameter

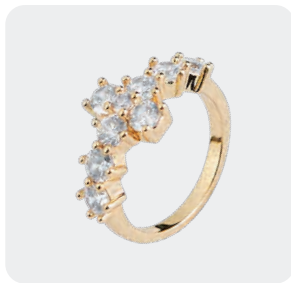




GLORY NECKLACE

#15033 | \$64

Emerald cut crystals
16" + 3"



CHOSEN RING

#15061 | \$74

CZs
Size 6-10



HALO NECKLACE

#13912 | \$56

CZ
16" + 3"



TRUTH EARRINGS

#13886 | \$44

Crystals
7/8"



PROSECCO BRACELET

#14300 | \$256

CZs - Gold or Silver
Hinge closure - 2 1/2" diameter



GLO EARRINGS

#12984 | \$48

Crystals- Gold, Silver,
Rose Gold or Hematite
1" Diameter



EDEN NECKLACE
#14878 | \$112
CZs - 16" + 3"



PROSECCO BRACELET
#14300 | \$256
CZs - Gold or Silver
Hinge closure
2 1/2" diameter



DYNASTY RING
#13635 | \$74
Crystals
Size 6-10



CREPE EARRINGS
#12841 | \$26
Gold or Silver
7/8"



EMBRACEABLE BRACELET
#14272 | \$56
Gold or Silver
2 1/2" diameter



ETERNITY EARRINGS
#12388 | \$22
3/4"



EMBRACEABLE EARRINGS
#14885 | \$42
Gold or Silver
1 1/8" in diameter



SIERRA NECKLACE

#15053 | \$152

Genuine agate.

2 in 1 Style

16" + 3 - 18" + 3"



LIFESTYLE BRACELET

#12901 | \$52

Gold, Silver or Hematite

2 1/2" diameter



MARGOT EARRINGS

#14547 | \$58

Crystals - Gold or Silver

1 1/2" long



CAREFREE BRACELET

#15051 | \$152

Genuine freshwater pearls and rose quartz

Set of 5 bracelets - Stretch to fit - 2 1/2" in diameter



JOURNEY RINGS

#15050 | \$112

Crystals & Pearls

Set of 3 rings - Size 6-10



A. UNITE RING
#6473 | \$40
 Size 6-10

C. WISHBONE EARRINGS
#14701 | \$54
 Gold or Silver
 1" long

E. HAZY NECKLACE
#14159 | \$106
 Gold or Silver
 16" + 3"

B. HAZY BRACELET
#14471 | \$58
 Gold or Silver
 Stretch to fit

D. WINDSOR NECKLACE
#14463 | \$56
 CZ - Blue-Silver or
 Clear-Gold
 16" + 3"

F. DALLAS EARRINGS
#14144 | \$90
 Gold or Silver
 1 1/2" in diameter



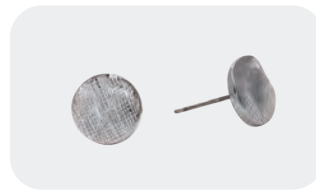
STERLING NECKLACE
#15054 | \$128
24", 28" +3"



HAZY EARRINGS
#15056 | \$54
Available in gold or silver
7/8" in diameter



ARCADIA BRACELET
#14872 | \$128
Gold with green crystals or
Silver with blue crystals
Stretch to fit - 2 1/2" diameter



DOTTIE EARRINGS
#13153 | \$22
Rose Gold, Gold, Silver
or Hematite 3/8" diameter

DIMENSION RING
#12637 | \$34
Gold or Silver Size
6-10





BEV NECKLACE
#14707 | \$112
CZs - 16" + 3"



WHISPER EARRINGS
#8916 | \$22
Silver or Gold
4" long



SPARKLING EARRINGS
#12243 | \$64
CZs and Crystals
3/8"



DYNASTY RING
#13635 | \$74
Crystals
Size 6-10



GLO EARRINGS
#12984 | \$48
Crystals- Gold, Silver,
Rose Gold or Hematite
1" Diameter



CHATEAU BRACELET
#14458 | \$228
CZs and genuine mother-of-pearl
Gold or Silver - 2 1/2" diameter



CHERISH BRACELET
#8028 | \$30
Crystal
7 1/2"



FOXY NECKLACE
#15039 | \$70
Gold or Silver 16"
+ 3"

FOXY EARRINGS
#15038 | \$54
Gold or Silver
1/2" in diameter



ROYAL BRACELET
#14149 | \$288
CZs - Gold,
Silver, or Rose Gold
2 1/2" diameter



JULIET NECKLACE
#13557 | \$42
Gold or Silver
16" + 3"



PROMISE RING
#13794 | \$116
CZs - Gold or Silver
Size 6-10



ALMOND EARRINGS
#14018 | \$42
Gold, Rose Gold, or Silver
2" long



ELEXA NECKLACE

#13659 | \$88

Gold or Silver - 3 in 1 Style
15" - 20" - 24" + 3"



CHANTEL EARRINGS

#14273 | \$86

Gold or Silver
1 1/2" diameter

CHICO EARRINGS

#13789 | \$38

Gold, Rose Gold,
or Silver



SAWYER RING

#13870 | \$74

Gold or Silver
Size 6-10



FLAIR BRACELET

#10287 | \$38

Gold or Silver - Adjustable
2 1/4" diameter



MARS BRACELET

#13254 | \$42

Crystals
Stretch to Fit



ANGELIC NECKLACE

#14156 | \$122

CZs - Gold or Silver

3 in 1 Style

15", 16, & 18"+3"



BONNET EARRINGS

#14183 | \$56

Trillion Cut Crystals - 1/2"

Blue or Pink



FREESIA BRACELET

#15060 | \$184

Hand painted flowers and micro pearls
Available in gold or silver - 2 1/2" in diameter



JOSIE RING

#12959 | \$106

CZs - Gold or Silver

Size 6-10



TRUDY NECKLACE
#14287 | \$100

2 in 1 necklace - Gold or Silver
16" + 3" - 20" + 3"



DAINTY EARRINGS
#12386 | \$38
Crystals
1/2"

INFINITE EARRINGS
#12385 | \$22
Crystals
1/2"



WILDER BRACELET
#14880 | \$144
Gold or Silver
2 1/2" diameter



AMOUR RING
#11195 | \$30
Crystal
Size 6-10



SORREL BRACELET
#14700 | \$74

Crystals - Adjust to fit
Gold or Silver
2.5" in diameter



MOANA EARRINGS
#13030 | \$30
Gold, Silver or Rose Gold
3" long



DISCO NECKLACE
#15052 | \$164
Toggle clasp
18" long



DOVEY EARRINGS
#13223 | \$34
Gold, Silver or
Glass Pearls
Reversible - 5/8"



MIRACLE BRACELET
#13190 | \$52
Adjust to Fit



SLOAN EARRINGS
#15057 | \$90
Set of three hoop earrings
1" in diameter



A. PRAYER NECKLACE

#10335 | \$32

CZ
16" + 2"

C. ROO NECKLACE

#13260 | \$38

Crystals - Gold, Silver, Rose
Gold, or Hematite -15" + 3"

E. ROO EARRINGS

#13644 | \$42

Crystals - Gold, Silver, Rose
Gold, or Hematite
1/2" diameter

B. PEARL NECKLACE

#12865 | \$50

Glass Pearl
15" + 3"

D. HAPPY NECKLACE

#13753 | \$76

CZs - Gold or Silver
Reversible - 15" + 3"

F. HAPPY EARRINGS

#14184 | \$56

CZs - Gold or Silver
1/2"



GWENYTH EARRINGS

#12996 | \$22

1" long



CREST EARRINGS

#14271 | \$70

Crystals - Gold, Silver,
or Rose Gold

5/8"



RICA BRACELET

#13665 | \$64

Silver or Gold

Stretch to Fit



PAWS BRACELET

#13002 | \$42

Adjust to fit



ELECTRIC NECKLACE

#14004 | \$70

Gold or Silver - 2 in 1 style

Crystals - 15" & 17" + 3"

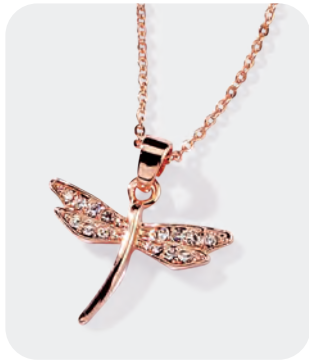


TWIZZLER EARRINGS

#13295 | \$36

Gold, Rose Gold, or Silver

2 1/2" long



ILLUMINATE NECKLACE
 #13746 | \$50
 Crystals
 15" + 2"



BELLE EARRINGS
 #12237 | \$36
 Crystals
 2 1/4" long



SAINT NECKLACE
 #14307 | \$74
 16" + 2"



ROYAL BRACELET
 #14149 | \$288
 CZs - Gold, Silver or Rose Gold
 2 1/2" diameter



QUARTZY RING
 #13235 | \$50
 Genuine Quartz &
 Crystals
 Size 6-10



MOANA EARRINGS
 #13030 | \$30
 Gold, Silver or Rose Gold
 3" long



SERENA BRACELET
 #11760 | \$74
 Gold, Rose Gold, or Hematite
 Stretch to Fit



GALAXY NECKLACE

#13959 | \$116

Crystals & Handpainted Enamel
3 in 1 Style - 16", 20", 23" + 3"



GLO EARRINGS

#12984 | \$48

Crystals- Gold, Silver,
Rose Gold or Hematite
1" Diameter



ALMOND EARRINGS

#14018 | \$42

Available in Gold, Rose Gold, or Silver
2" long



LOVEY BRACELET

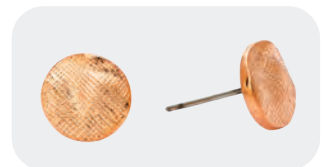
#13061 | \$40

Crystals
Stretch to Fit - 2 1/2" diameter

DOTTIE EARRINGS

#13153 | \$22

Rose Gold, Gold, Silver
or Hematite 3/8" diameter





A. ROO NECKLACE
#13260 | \$38
 Crystals - Gold, Silver,
 Rose Gold,
 or Hematite -15" + 3"

B. CHICO EARRINGS
#13789 | \$38
 Gold, Rose Gold,
 or Silver

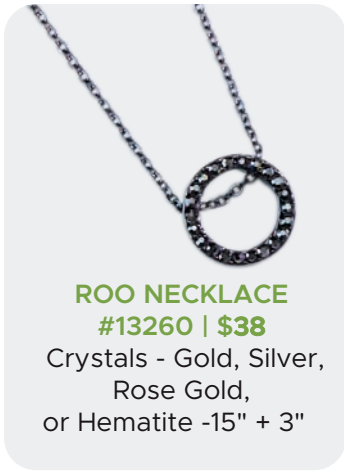
C. ROO EARRINGS
#13644 | \$42
 Crystals - Gold, Silver, Rose
 Gold, or Hematite
 1/2" diameter

D. CREST EARRINGS
#14271 | \$70
 Crystals - Gold, Silver,
 or Rose Gold
 5/8"

D. TWIZZLER EARRINGS
#13295 | \$36
 Gold, Rose Gold, or Silver
 2 1/2" long

BUY 2 GET 4
HALF OFF





ROO NECKLACE
#13260 | \$38

Crystals - Gold, Silver, Rose Gold, or Hematite -15" + 3"



ROO EARRINGS
#13644 | \$42

Crystals - Gold, Silver, Rose Gold, or Hematite
1/2" diameter



OUI EARRINGS
#13338 | \$48

Crystals
Set of 3 - 1 1/2" long



ZIGGY RING
#13326 | \$56

CZs
Size 6-10



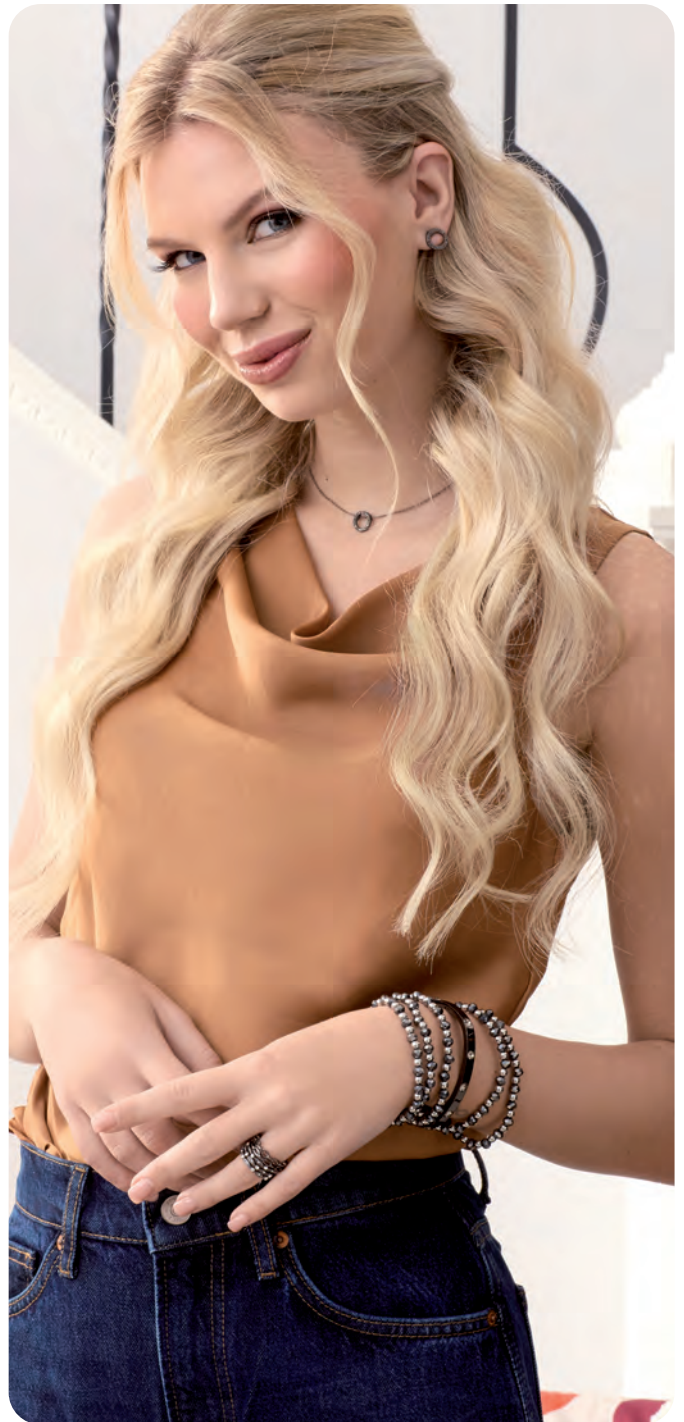
DOTTIE EARRINGS
#13153 | \$22

Rose Gold, Gold, Silver or Hematite 3/8" diameter



GLO EARRINGS
#12984 | \$48

Crystals- Gold, Silver, Rose Gold or Hematite
1" diameter



CAVIAR RING
#14146 | \$76

Set of 5 Rings - Crystals - Size 6-10



FOCUS BRACELET

#12769 | \$32

Crystals
7 1/2"



DENALI BRACELET

#13638 | \$90

Set of 5 bracelets - Gold or Silver
Stretch to Fit



LIFESTYLE BRACELET

#12901 | \$52

Gold, Silver or Hematite
2 1/2" diameter



SERENA BRACELET

#11760 | \$74

Gold, Rose Gold or Hematite
Stretch to Fit



JEWEL BRACELET

#13366 | \$114

Crystals
Rose Gold, Silver, Hematite or Gold
Hinge closure - 2 1/2" Diameter



BAUBLE BRACELET

#14467 | \$274

CZ's - Gold or Hematite
2 1/2" Diameter



IMPRESSION BRACELETS

#13010 | \$274

7" + 2"

- A. Blue
- B. Clear / Gold
- C. Lavender
- D. Iridescent Coral
- E. Violet
- F. Clear / Silver
- G. Baby Pink
- H. Northern Lights
- I. Turquoise
- J. Pink Opal
- K. Mint
- L. Taupe
- M. Glow
- N. Opal
- O. Jet



MINI IMPRESSION BRACELET

#14886 | \$186

CZs

7" + 2"

IMPRESSION

E A R R I N G S



IMPRESSION EARRINGS

#13922 | \$42

- A. Blue
- B. Clear / Silver
- C. Pink Opal
- D. Jet
- E. Opal
- F. Iridescent Coral
- G. Glow
- H. Violet
- I. Northern Lights
- J. Lavender
- K. Baby Pink
- L. Turquoise
- M. Clear / Gold



IMPRESSION NECKLACES

#14470 | \$48
16" + 3"

- A. Orange
- B. Green
- C. Black
- D. Red
- E. Purple
- F. Sapphire Blue

IMPRESSION

N E C K L A C E S

HIS OR HERS



**A. YELLOWSTONE
BRACELET**
#13633 | \$48
Unisex
Stretch to Fit

B. ATLANTIC BRACELET
#13750 | \$144
Genuine White Turquoise or
Tiger's Eye Jet CZs
Unisex - Stretch to Fit

C. SLATER BRACELET
#14301 | \$58
Semi precious stones
Turquoise or Brown
Adjust to fit

D. OTTO BRACELET
#14555 | \$102
Genuine Blue Tiger-Eye
Adjust to fit

Almond - 24,33,41	Denali - 22,44	Happy - 19,38	Otto - 47	Sunset - 4
Amour - 36	Denver - 10,14	Harmony - 17	Oui - 43	Tansy - 7
Angelic - 9,35	Dimension - 6,16,31	Hazy - 1,25,26,30,31	Palmer - 22	Tart - 13
Apricot - 15	Disco - 37	Honey - 24	Paradigm - 5	Tiramisu - 10
Arcadia - 2,31	Dolly - 13	Illuminate - 40	Paws - 39	Trudy - 16,36
Ashton - 10	Domino - 5	Impression - 45,46	Pearl - 38	Truth - 27
Atlantic - 47	Dottie - 9,31,41,43	Infinite - 36	Phoebe - 3	Twizzler - 20,39,42
Bauble - 21,44	Dovey - 12,13,37	Ivory - 14	Phoenix - 11	Unite - 30
Belle - 40	Dynasty - 28,32	Jazzy - 19	Prayer - 38	Vibes - 4,5
Bev - 32	Eden - 28	Jewel - 26,44	Promise - 21,33	Viper - 23
Bijoux - 4	Electric - 26,39	Josie - 19,26,35	Prosecco - 27, 28	Waterfall - 11
Bombshell - 10,12,14	Elexa - 22,34	Journey - 29	Quartz - 40	Whisper - 25,32
Bonnet - 15,35	Embraceable - 8,28	Juliet - 17,33	Queenie - 23	Wilder - 24,36
Brynlee - 16	Esme - 12	Kai - 11	Rae - 3	Willow - 17
Carefree - 29	Eternity - 28	Lana - 5,14,24,25	Ranger - 18	Windsor - 22,30
Carmelia - 18	Everest - 2	Lennox - 23	Reese - 17	Wishbone - 14,30
Caviar - 43	Fairytale - 6	Lifestyle - 22,29,44	Rica - 7,39	Worthy - 18
Chantel - 22,34	Faith - 20	Lovey - 41	River - 2	Wren - 10
Chateau - 20,32	Fawn - 3	Mantra - 18	Roo - 26,38,42,43	Yellowstone - 47
Cherish - 32	Fig - 2	Margot - 17,29	Royal - 23,33,40	Ziggy - 43
Cherub - 20	Flair - 11,34	Mars - 34	Saint - 40	
Chic - 3	Flora - 8	Marshmallow - 13	Sandlewood - 6	
Chico - 8,16,34,42	Flutter - 18	Matinee - 16	Sawyer - 13,34	
Chosen - 27	Focus - 44	McKenna - 12	Serena - 26,40,44	
Cleo - 2	Foxy - 21,33	Mini Impression - 45	Sherbet - 15	
Cobalt - 5	Freesia - 19,35	Minnie - 8	Sierra - 29	
Crème - 16	Furever - 6	Miracle - 37	Skye - 1	
Crepe - 7,28	Galaxy - 41	Moana - 36,40	Slater - 47	
Crest - 15,39,42	Gem - 1,15	Monaco - 2	Sloan - 37	
Cutesy - 23	Glo - 21,27,32,41,43	Monte Carlo - 20	Sonny - 1	
Dainty - 36	Glory - 27	Moonflower - 12	Sorrel - 9,36	
Daisy - 9	Groovy - 7	Namaste - 7, 24	Sparkling - 32	
Dallas - 2, 30	Gwenyth - 39	Nirvana - 9	Stardust - 4,6	
Declan - 21	Halo - 27	Ocean - 11	Sterling - 31	

HOST REWARDS

"THANK YOU" FOR HAVING YOUR STYLE SHOW	Select any item valued up to \$200 for only \$40.
FREE SHOPPING	Receive \$20 shopping credit per order. CREDIT DOUBLES (per order) to \$40 with 10 or more orders.
FOUR ITEMS OF YOUR CHOICE AT 50% OFF	May purchase up to four items for half price.
EXTRA THANKS	May purchase an additional "Thank You" for each qualified Style Show booked, when held.
BECOME A STYLIST	Earn 30% - 50% commission.

OUR GOAL IS TO MAXIMIZE
YOUR PERKS

SHOP @ [PARKLANEJEWELLERY.COM.AU](https://www.parklanejewellery.com.au)

**RETRO
CHIC**
COLLECTION

PARK•LANE
JEWELRY | EST. 1955



[PARKLANEJEWELLERY.COM.AU](https://www.parklanejewellery.com.au)

STYLIST:



#PARKLANEJEWELRY

© 2025 PARK LANE JEWELLERY CO.
ALL RIGHTS RESERVED