

75 ANNIVERSARY
PARK LANE
JEWELRY | EST. 1955



Sunny
Days



Sunny
Days



Colada Necklace

A. 15202 - \$92

Genuine mother of pearl
pendant & crystals
16"+3"

Lainey Ring

B. 15204 - \$56

Hand painted teal enamel
Clear and pink crystals
Available in sizes 6-10

Guava Earrings

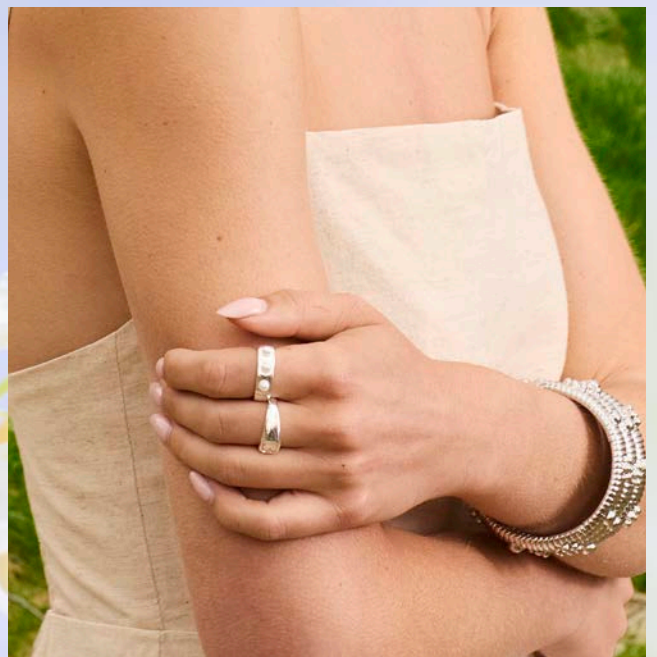
C. 15207 - \$70

Blush crystals
Featherweight
2 1/2" in diameter

Bless Bracelet

D. 15199 - \$44

Pink cross design
Stretch to fit
2 1/2" in diameter





Sunny
Days



Cove Necklace

A. 15195 - \$76

Genuine mother of
pearl shells
16"+3"

Breeze Earrings

B. 15198 - \$46

Hammered finish
Featherweight
2 3/4" long

Journey Ring

C. 15050 - \$76

Crystals & Pearls
Set of 3 rings
Availbel in sizes 6 - 10

Wilder Bracelet

D. 14880 - \$98

Silver or Gold
2 1/2" diameter



Sunny Days



Sunshine Earrings

E. 15194 - \$44

Textured gold statements
Featherweight
3" long

Marshmallow Bracelet

A. 13764 - \$88

Hand Painted white enamel
Faceted crystals
Stretch to fit

Moonflower Ring

B. 14879 - \$76

Genuine mother of pearl
Micro pave CZs
Available in sizes 6 - 10

Lana Earrings

C. 14713 - \$30

Hand cut lucite
Available in black,
lavender, white, and red
1/2"

Wanderlust Necklace

D. 15208 - \$92

Genuine mother
of pearl shell
16"+3"





Hazy Bracelet

A. 14471 - \$42

Silver or Gold
Stretch to fit

Sawyer Ring

B. 13870 - \$52

Silver or Gold
Available in sizes 6 - 10

Cascade Necklace

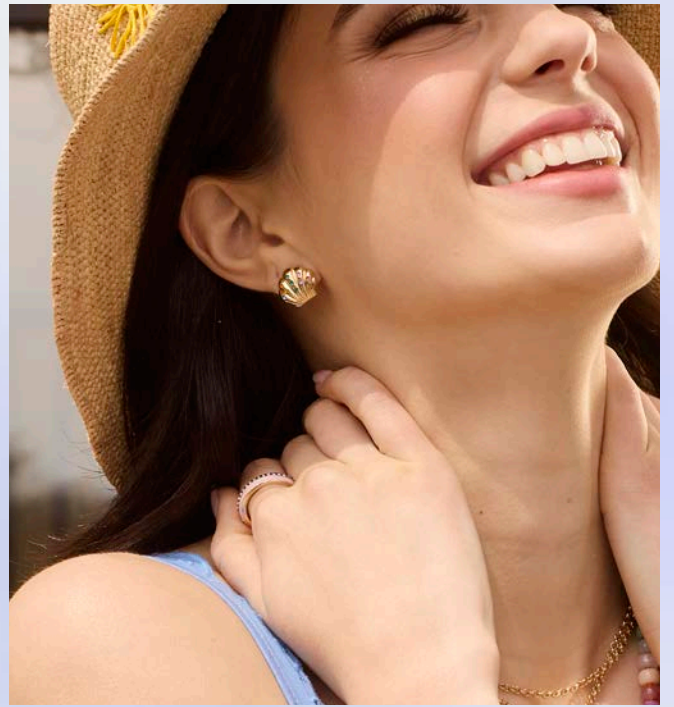
C. 15197 - \$118

Faceted glass beads
Can be styled as a
necklace or bracelet
36"

Hazy Earrings

D. 15056 - \$36

Silver or Gold
7/8" in diameter



Sunny Days



Sunset Necklace

A. 14875 - \$186

3 in 1 style necklace
Crystals
Genuine jade, amazonite,
and malachite beads
Removable heart pendant
15", 16", 20" + 3"

Ariel Earrings

B. 15201 - \$36

Micro multicolor crystals
5/8" in diameter

Bubblegum Ring

C. 15205 - \$64

Hand painted baby
pink enamel
Hues of pink, purple and
baby blue crystals
Available in sizes 6-10

Bubblegum Bracelet

D. 15206 - Style Drop

\$35 with a \$40 purchase
Hand painted baby
pink enamel
Hues of pink, purple and
baby blue crystals
Stretch to fit
2 1/4" in diameter

Razzle Bracelet

E. 15200 - \$64

Multicolor crystals
Crystals
in shades of, topaz, yellow,
green, purple, blue and
pink - Stretch to fit
2 1/4" in diameter





Sunny
Days

A.

B.

C.

D.

Lotus Necklace

A. 15196- \$62

Aurora borealis crystals
Reversible design
16"+3"

Sandy Earrings

B. 15203 - \$54

Glass pearl
7/8" diameter

Flora Ring

C. 14465 - \$68

CZs
Available in sizes 6-10

Bombshell Bracelet

D. 14012 - \$164

Crystals - Enamel White,
Pink, or Black
Stretch to fit